

ELECTRIC LINEAR ACTUATOR SOLUTIONS

**For Lightweight
and Heavy Duty
Applications**



EDRIIVE[®]
A C T U A T O R S



Founded in 1980, EDrive pioneered the evolution of precision electromechanical actuators with our first patented design. Over the years, our business has grown based on our philosophy of design flexibility and rapid response to our customers' requests. While we offer "standardized" product lines we regularly customize based on specific needs.

Industries Served:

- Agriculture
- Automotive & Transportation
- Defense
- Food & Beverage
- Forestry & Lumber
- Material Handling & Packaging
- Motion Simulators & Entertainment

Electric Linear Actuators

FOR TOUGH, INDUSTRIAL AUTOMATION APPLICATIONS

EDrive Actuators, Inc. manufactures electric linear actuators for tough, industrial automation applications. Our products are used in a wide variety of industry applications where conservative design, rugged construction, long life, and high precision are required and valued. More specifically as replacement for older power solutions like hydraulic and pneumatic linear actuators. There is a reason why an ever-increasing number of machine builders are switching to electric linear actuators.

Benefits of Electric Actuation:

- Cleaner, quieter, and more energy efficient
- Improved performance
- Less maintenance required
- More accuracy and repeatability
- More flexibility and scalability
- Higher speed and force
- Higher system stiffness
- Lower operating costs

COST EFFECTIVE, GENERAL PURPOSE AUTOMATION SOLUTION

EDrive's Universal Actuator UA series is designed to easily drop into automation applications. These compact actuators feature an aluminum extrusion cylinder designed with industry-standard T-slots for quick mounting. Chrome piston with anti-rotation is standard and available in lengths up to 24 inches and speeds up to 50 in/sec. Quickly position limit switches along the cylinder. Ideal for a variety of industries and applications including Industrial Automation, Robotics, Packaging, Food, and Beverage.

Universal Actuator UA™



Key Features:

- Rated thrust up to 500 lbf
- Velocity up to 50 in/sec
- Designed with T-slot bracketing for quick mounting
- Sealed from contamination (IP54)
- Adjustable limit switches available
- Piston with internal anti-rotation

TAC SERIES ACTUATORS



Tac Series Actuators provide high quality, rugged and durable linear motion for both low and high force applications. Using aluminum bodies with steel components, these more compact-sized actuators are a good fit in most linear motion industrial applications.

EDrive's Tac Series Features:

- Capacities up to 2,000 lbs
- Aluminum or 316 stainless steel
- Standard stroke lengths up to 60"
- Velocity up to 40"/sec

Tac LS™ Actuator

LONG STROKE, HIGH SPEED, HIGH FORCE

The Tac LS ball screw linear actuator series was developed for long stroke applications. This high quality, durable linear actuator, is constructed using rugged aluminum alloy cylinders and chrome plated heavy wall steel pistons. Its small size, as well as the ease of adapting it to any standard unit mounting style, makes the Tac LS electric linear actuators a good fit in most linear motion industrial applications.



Key Features:

- Developed for long stroke applications
- Small size easily adapts to any standard unit mounting style
- Long stroke actuator with thrust up to 2,000 lbf
- Velocity up to 40 in/sec, Stroke from 24 to 60 inches

Tac VT™ Actuator

COST EFFECTIVE, HIGH QUALITY, HIGH SPEED, HIGH FORCE

The Tac VT ball screw linear actuator series was developed to meet higher thrust load requirements at faster velocities with high quality and rugged durability. Using an aluminum body with steel components, chrome plated heavy wall steel piston, and steel/bronze anti-rotation, this linear actuator ensures rigid alignment.



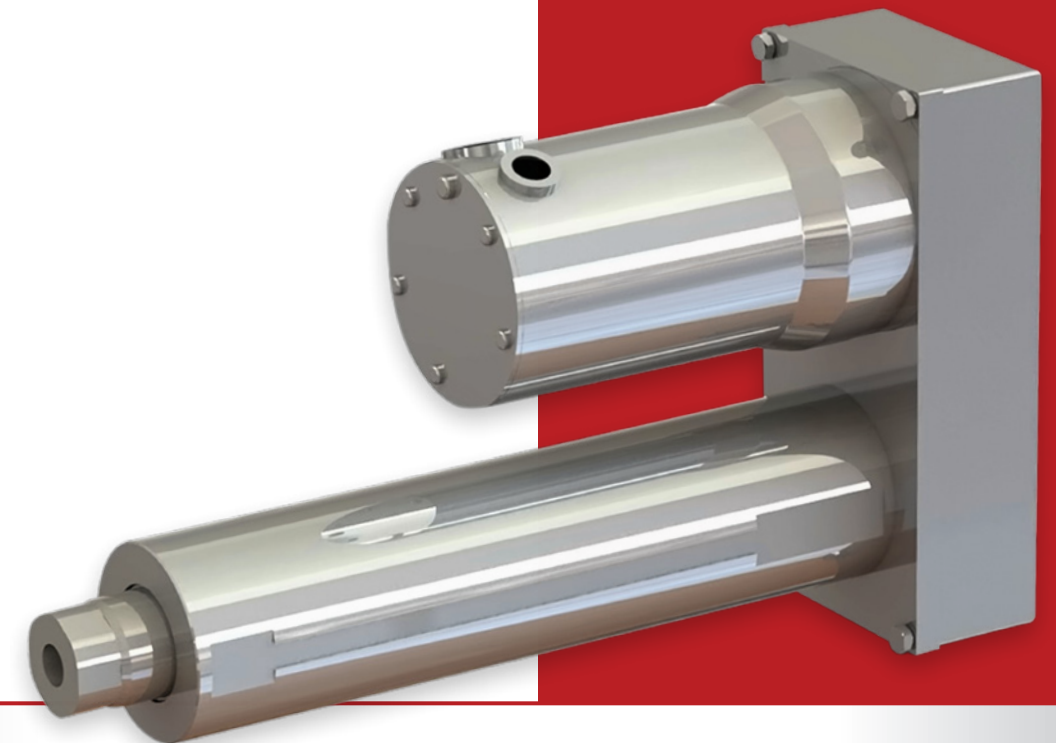
Key Features:

- Developed for higher thrust load requirements and faster velocities
- Compact actuator with thrust up to 2,000 lbf
- Velocity up to 40 in/sec, Stroke rate up to 24 inches
- Sealed chamber design with purge provisions to meet IP54

Tac VP™ Actuator

IP69K STAINLESS STEEL, HIGH QUALITY, HIGH SPEED, HIGH FORCE

Tac VP series stainless steel linear actuators deliver all the performance advantages of our VT actuators with the added benefit of an IP69K rating and a contoured 316 stainless steel housing. Ideally suited for food-grade applications, severe environments and caustic washdown conditions.



Key Features:

- IP69K rated for high-pressure, high-temperature washdown
- 316 stainless steel contoured exterior
- Compact actuator with thrust up to 2,000 lbf
- Velocity up to 40 in/sec, Stroke up to 24 inches
- Multiple motor/actuator mounting configurations available
- Piston with anti-rotation, sealed chamber design

IP69K

ELIMINATOR SERIES ACTUATORS



Eliminator Series Actuators

provide strong, durable, and precise linear motion for industrial automation. They were designed to replace hydraulic actuators and thus “eliminate” many associated concerns, such as noise and fluid leakage.

Eliminator Series Actuators are available with an internal load cell that can measure force in both directions.

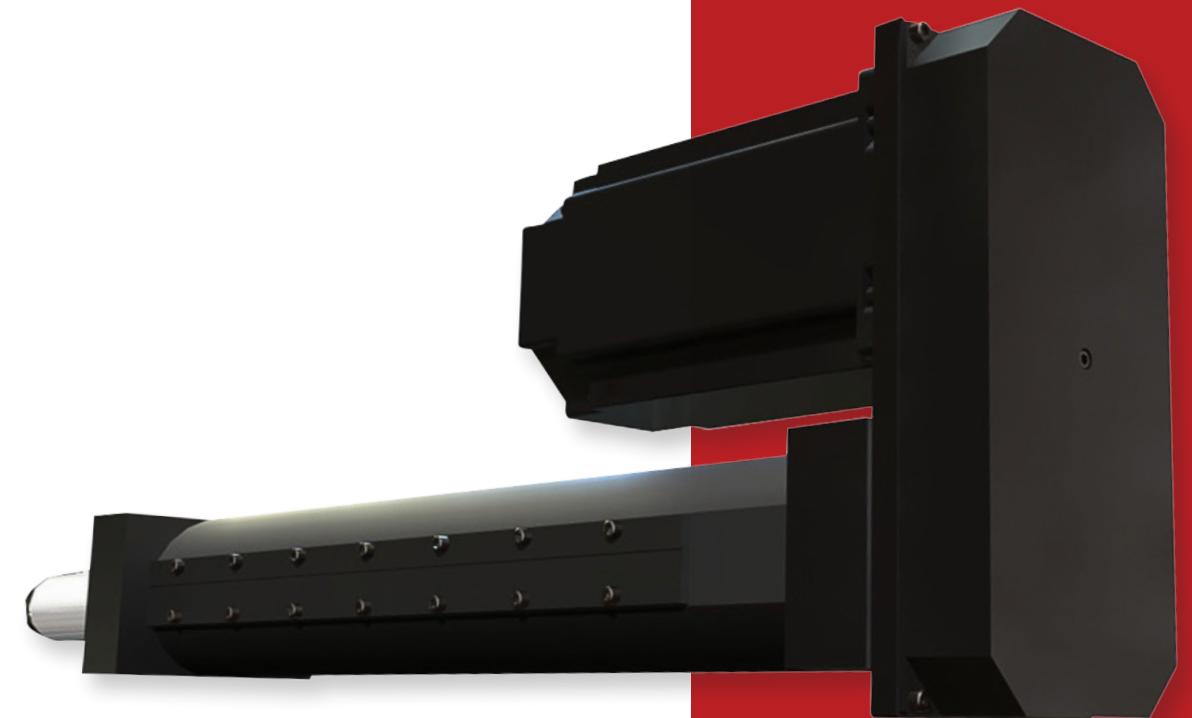
EDrive’s Eliminator Series Actuators Feature:

- Capacities up to 100,000 lbs
- Steel or 316 stainless steel
- Standard stroke lengths up to 48”
- Velocity up to 65”/sec
- Internal load cell option

EXTREME SPEED CAPABILITY IN AN ELIMINATOR PLATFORM

The Eliminator SS Super Speed actuator is the linear solution for those automation applications demanding extremely high-speed motion. This combination of high thrust capacity, fast actuation, and precision motion are all provided in a strong, durable, actuator built on the Eliminator HD platform and adaptable to your servomotor.

Eliminator SS™ Super Speed Actuator



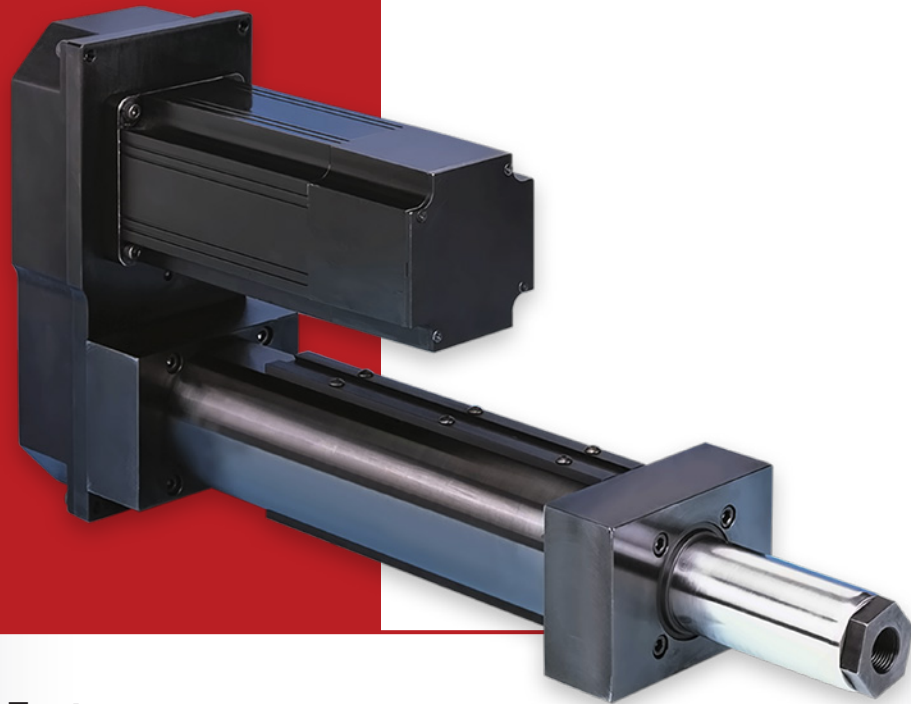
Key Features:

- Rugged steel construction with durable anti-rotation feature
- Rated thrust up to 2,000 lbf
- Extreme speed capability up to 65 in/sec, Strokes up to 48 inches
- Sealed chamber design with purge provisions to meet IP54

Eliminator HD™ and HDL™ Heavy Duty Actuators

HEAVY DUTY, HIGH SPEED, HIGH FORCE, HIGH PRECISION

The Eliminator HD and HDL series Heavy Duty linear actuators provide strong, durable, and precise linear motion for industrial automation. The HD was designed to replace hydraulic actuators and thus “eliminate” many associated concerns, such as noise and fluid leakage, while providing high load, high speed, and high accuracy linear motion that is controllable, repeatable, and easy to adjust.

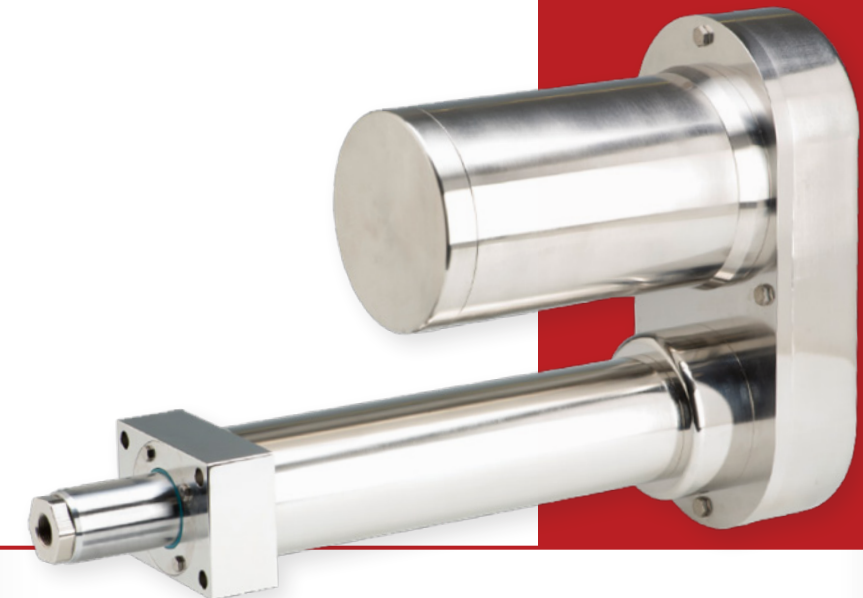


Key Features:

- Rugged steel construction with durable anti-rotation feature
- Rated thrust up to 25,000 lbf
- High velocity up to 23 in/sec, Stroke up to 48 inches
- 0.002 in/ft standard lead accuracy, 0.0005 in/ft optional lead accuracy*
- Integrated load cell option provides continuous bi-directional measurement of applied thrust (HDL model)

IP69K STAINLESS STEEL, HEAVY DUTY, HIGH SPEED, HIGH FORCE

The Eliminator SP and SPL series Heavy Duty linear actuators offer all the performance advantages of our HD actuator, now with IP69K rating. Ideal for food and medical grade applications, this 316 stainless steel actuator is designed for high-pressure and high-temperature washdown conditions.



Key Features:

- IP69K rated for high-pressure, high-temperature washdown
- Contoured 316 stainless steel construction with hard chrome plated piston rod
- Durable anti-rotation feature
- Rated thrust up to 25,000 lbf
- Velocity to 23 in/sec, Strokes up to 48 inches
- 0.002 in/ft standard lead accuracy, with 0.0005 in/ft option
- Integrated load cell option provides continuous bi-directional measurement of applied thrust (SPL model)

IP69K

Eliminator SD™ Super Duty Actuator

EXTREME THRUST CAPABILITY IN ELIMINATOR HD PLATFORM

The Eliminator SD super duty linear actuator provides extreme thrust capacity for your high thrust industrial applications. Achieve the perfect high precision/high load capacity solution when you combine your servomotor with this heavy-duty steel actuator.



Key Features:

- Rugged steel construction with durable anti-rotation feature
- Extreme thrust capacity up to 100,000 lbf
- Velocity up to 12 in/sec, Strokes up to 48 inches
- Combines with your servomotor to achieve the perfect high precision/high load capacity

INTERNAL LOAD CELL FEATURE



EDdrive manufactures Heavy Duty linear actuators with Internal Load Cells that deliver bi-directional force feedback for loads up to 100,000 lbs, providing an economical force measurement solution for precise applications.

Measure While You Press:

- Measure force in both directions
- Provide continuous mV/V output signal
- Accurate to within 0.05% of rated force
- Available in both Inline and Parallel Offset mounting configurations
- Standard option for Eliminator Series actuators

Consistent Success

IN THE TOUGHEST APPLICATIONS

EDrive linear actuators have shown consistent success in the toughest applications, e.g., high loads, high speeds, high precision, and extreme durability. Precision ball screw systems, tailored for maximum life, load and speed, provide the motion while fully enclosed, thus eliminating contamination-related failures. A long bronze nose bearing provides support for the extended piston. Rugged bronze keys in opposing steel slots provide anti-rotation and counter the tangential forces created during high speed, high frequency, and high load operation.

Designed to Mount Any Motor

Rugged Piston
Anti-Rotation Features
a Pair of Opposing Keys

Internal Bumper
Helps Prevent Jamming
at Both Ends of Travel

Long Sleeve Bearing Guides
and Supports the Piston

High Capacity
Precision Ball
Screw and Support
Bearing System

Re-Grease Provision
from Either Side

High Strength Heavy
Wall Steel Cylinder
Provides Rigidity,
Stability and Protection

Rod Wiper
Seal Protects the
Internal Components

Heavy Wall Alloy Steel
Piston Provides Rigidity
and a Hard Chrome Plate

While other actuator designs force a particular motor decision, EDrive's linear actuators are designed to suit virtually any motor, gear box, or gearhead the customer chooses to use. Inline as well as parallel offset configurations are standard with 1:1 and 2:1 synchronous gearbelt ratios available.

Products available in Parallel Offset and Inline configurations.

**EDRIVE CUSTOMERS
ENJOY AN UNSURPASSED
COMMITMENT TO SUPERIOR
QUALITY, INTEGRITY, AND
CUSTOMER SERVICE.**

Our experienced staff provides technical support as needed to assist in specifying the most appropriate solutions. Whether you need a standard product or a fully customized actuator, EDrive is your answer.



EDrive is the name you can trust for standard or fully customized actuators. Contact our experienced staff today!

Phone: **1-860-953-0588**

Toll Free: **1-800-878-1157**

sales@edriveactuators.com



EDrive Actuators, Inc.
385 Stamm Road
Newington, CT 06111

www.edriveactuators.com

