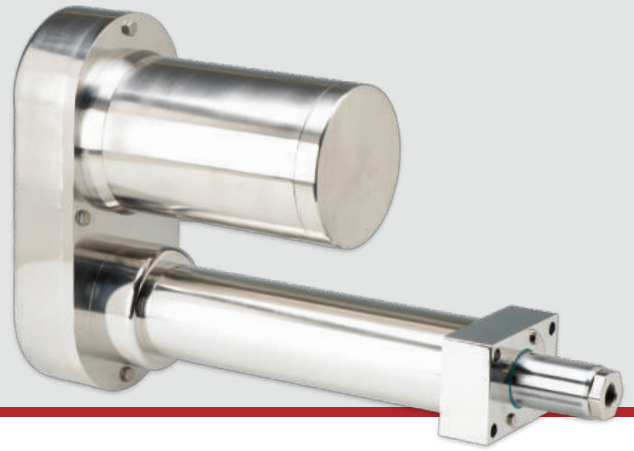


PRODUCT ORDERING GUIDE


Eliminator Series STL

STAINLESS STEEL WITH LOAD CELL



Custom products are available.

Contact sales@edriveactuators.com with your requirements.

BASE NUMBER				OPTIONS				SPECIAL											
S	T	L																	
Base No. (Capacity) STL201 (1,000 lbf) STL302 (2,000 lbf) STL304 (4,000 lbf) STL404 (4,000 lbf) STL406 (6,000 lbf) STL508 (8,000 lbf) STL516 (16,000 lbf) STL618 (18,000 lbf) STL625 (25,000 lbf)				Unit Mounting Option MB: Bottom Mount FF: Front Flange MF: Foot Mount TF: Front Trunnion Rod End Option E: Female Eye F: Female Thread A: Self-Aligning Coupler** M: Male Thread S: Spherical Rod Eye Configuration L: In-Line U: Parallel Offset				Motor Position 1, 3, 4 0 = In-Line  Gearbelt Reduction 00: In-Line/Direct Coupled 10: 1:1 20: 2:1 Switch Type A: Hall Sourcing PNP B: Hall Sinking NPN C: Reed X: No Switches				Custom Length (in) 00.00 Precision/Lead Accuracy** A: .002 in/ft Zero Backlash B: .0005 in/ft Zero Backlash X: Standard N.C. Switch Qty 0, 1, 2, 3, etc. N.O. Switch Qty 0, 1, 2, 3, etc.							
Std. Stroke Length* 06: 6 in. 12: 12 in. 18: 18 in. 24: 24 in. 30: 30 in. 36: 36 in. 42: 42 in. 48: 48 in.																			

* STL201 is available with stroke lengths up to 12 in.

STL301 – STL304 are available with stroke lengths up to 36 in.

STL404 – STL406 are available with stroke lengths up to 42 in.

STL508 – STL625 are available with stroke lengths up to 48 in.

** Self-Aligning Coupler is not available for STL625

*** STL201 – Std. Precision/Lead Accuracy is 0.0005 in/ft, Zero Backlash

*** STL304, STL404 – Zero Backlash not available

For applications support contact us today.

sales@edriveactuators.com

FB6156

EDrive Actuators, Inc.

385 Stamm Rd.

Newington, CT 06111

Website: edriveactuators.com

Phone: 1.860.953.0588

Fax: 1.860.953.0496

© 2019 all rights reserved