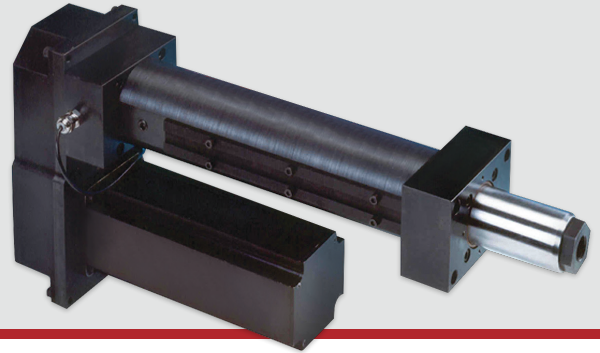


PRODUCT ORDERING GUIDE

Eliminator Series HDL

WITH LOAD CELL



Custom products are available.

Contact sales@edriveactuators.com with your requirements.

BASE NUMBER				OPTIONS						SPECIAL								
H	D	L																
Base Parts No. (Capacity)				Unit Mounting Option						Motor Position				Custom Length (in)				
HDL201 (850 lbf)				MB: Bottom Mount						1, 3, 4				00.00				
HDL302 (2,000 lbf)				FF: Front Flange						0 = In-Line								
HDL304 (4,000 lbf)				MF: Foot Mount														
HDL404 (4,000 lbf)				TF: Front Trunnion										Precision/Lead Accuracy				
HDL406 (6,000 lbf)				TR: Rear Trunnion										A: .002 in/ft				
HDL508 (8,000 lbf)														B: .0005 in/ft				
HDL516 (16,000 lbf)				End Effector/Rod End														
HDL518 (18,000 lbf)				E: Female Eye										N.C. Switch Qty				
HDL625 (25,000 lbf)				F: Female Thread										0, 1, 2, 3, etc.				
				A: Self-Aligning Coupler														
Std. Stroke Lengths*				M: Male Thread						Gearbelt Reduction								
06: 6 in.				S: Spherical Rod Eye						00: In-Line/Direct Coupled								
12: 12 in.										10: 1:1								
18: 18 in.				Configuration						20: 2:1								
24: 24 in.				L: In-Line										Switch Type				
30: 30 in.				U: Parallel Offset										A: Hall Sourcing PNP				
36: 36 in.														B: Hall Sinking NPN				
42: 42 in.														C: Reed				
48: 48 in.																		

* HDL201 is available with stroke lengths up to 12 in.
HDL302 – HDL304 are available with stroke lengths up to 36 in.
HDL404 – HDL406 are available with stroke lengths up to 42 in.
HDL508 – HDL625 are available with stroke lengths up to 48 in.