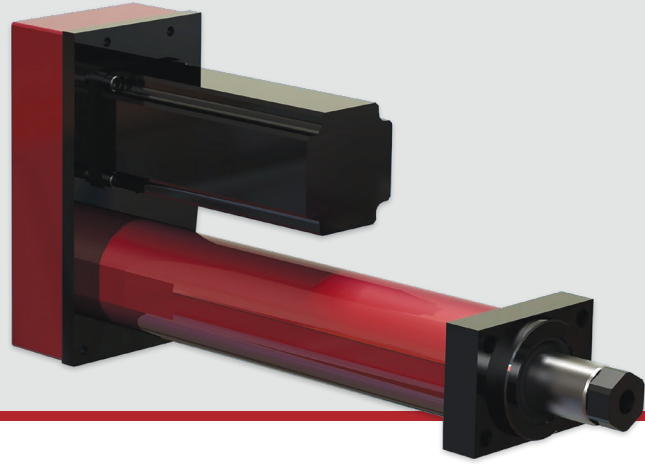


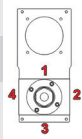
PRODUCT ORDERING GUIDE

Tac Series ET



Custom products are available.

Contact sales@edriveactuators.com with your requirements.

BASE NUMBER	OPTIONS	SPECIAL
<div style="display: flex; justify-content: space-around;"> <div style="border: 1px solid black; padding: 2px;">E</div> <div style="border: 1px solid black; padding: 2px;">T</div> <div style="border: 1px solid black; width: 20px; height: 20px;"></div> <div style="border: 1px solid black; width: 20px; height: 20px;"></div> <div style="border: 1px solid black; width: 20px; height: 20px;"></div> </div> <div style="display: flex; justify-content: space-between;"> <div style="width: 20%;"> <p>Base Parts No. (Capacity)</p> <p>ET202 (200 lbf)</p> <p>ET203 (300 lbf)</p> </div> <div style="width: 20%;"> <p>Unit Mounting Option</p> <p>MB: Bottom Mount</p> <p>FF: Front Flange</p> <p>MF: Foot Mount</p> <p>TF: Front Trunnion</p> <p>TR: Rear Trunnion</p> <p>CR: Rear Clevis</p> </div> <div style="width: 20%;"> <p>Motor Position</p> <p>1, 2, 3, 4</p> <p>0 = In-Line</p>  </div> <div style="width: 20%;"> <p>Custom Length (in)</p> <p>00.00</p> </div> </div> <div style="display: flex; justify-content: space-between;"> <div style="width: 20%;"> <p>Std. Stroke Lengths</p> <p>06: 6 in.</p> <p>12: 12 in.</p> </div> <div style="width: 20%;"> <p>End Effector/Rod End</p> <p>E: Female Eye</p> <p>F: Female Thread</p> <p>A: Self-Aligning Coupler</p> <p>M: Male Thread</p> <p>S: Spherical Rod Eye</p> </div> <div style="width: 20%;"> <p>Gearbelt Reduction</p> <p>00: In-Line/Direct Coupled</p> <p>10: 1:1</p> <p>20: 2:1</p> </div> <div style="width: 20%;"> <p>N.C. Switch Qty</p> <p>0, 1, 2, 3, etc.</p> </div> </div> <div style="display: flex; justify-content: space-between;"> <div style="width: 20%;"> <p>Configuration</p> <p>L: In-Line</p> <p>U: Parallel Offset</p> </div> <div style="width: 20%;"> <p>Switch Type</p> <p>A: Hall Sourcing PNP</p> <p>B: Hall Sinking NPN</p> <p>C: Reed</p> </div> <div style="width: 20%;"> <p>N.O. Switch Qty</p> <p>0, 1, 2, 3, etc.</p> </div> </div>	<div style="display: flex; justify-content: space-around;"> <div style="border: 1px solid black; width: 20px; height: 20px;"></div> <div style="border: 1px solid black; width: 20px; height: 20px;"></div> <div style="border: 1px solid black; width: 20px; height: 20px;"></div> <div style="border: 1px solid black; width: 20px; height: 20px;"></div> <div style="border: 1px solid black; width: 20px; height: 20px;"></div> </div> <div style="display: flex; justify-content: space-between;"> <div style="width: 20%;"> <p>Motor Position</p> <p>1, 2, 3, 4</p> <p>0 = In-Line</p> </div> <div style="width: 20%;"> <p>Gearbelt Reduction</p> <p>00: In-Line/Direct Coupled</p> <p>10: 1:1</p> <p>20: 2:1</p> </div> <div style="width: 20%;"> <p>Switch Type</p> <p>A: Hall Sourcing PNP</p> <p>B: Hall Sinking NPN</p> <p>C: Reed</p> </div> </div>	<div style="display: flex; justify-content: space-around;"> <div style="border: 1px solid black; width: 20px; height: 20px;"></div> <div style="border: 1px solid black; width: 20px; height: 20px;"></div> <div style="border: 1px solid black; width: 20px; height: 20px;"></div> <div style="border: 1px solid black; width: 20px; height: 20px;"></div> </div> <div style="display: flex; justify-content: space-between;"> <div style="width: 20%;"> <p>Custom Length (in)</p> <p>00.00</p> </div> <div style="width: 20%;"> <p>N.C. Switch Qty</p> <p>0, 1, 2, 3, etc.</p> </div> <div style="width: 20%;"> <p>N.O. Switch Qty</p> <p>0, 1, 2, 3, etc.</p> </div> </div>