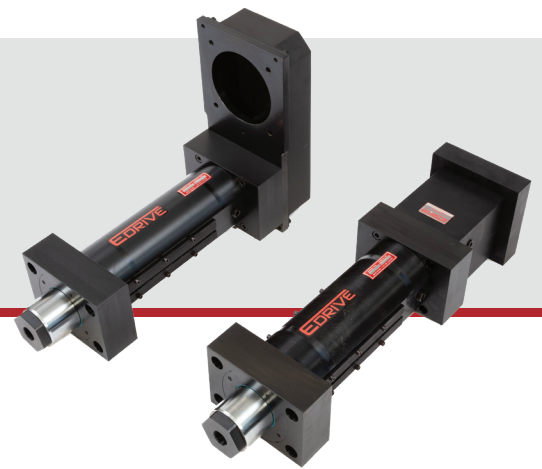
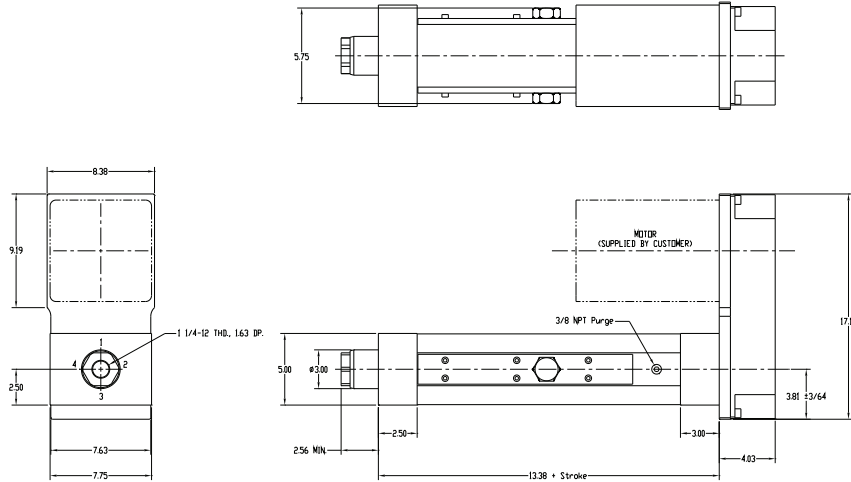


Eliminator HD516 Actuator
Without Switch Tracks for Mounting Limit Switches
English Dimensions

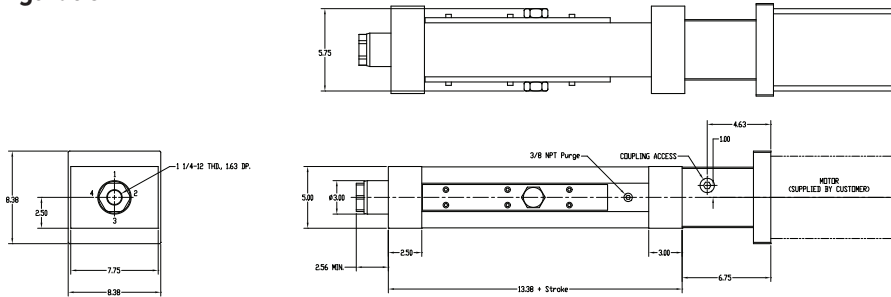


Motor Mount Configurations (choose one)

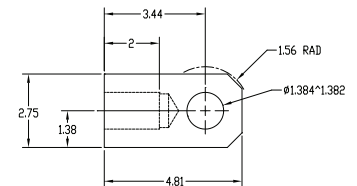
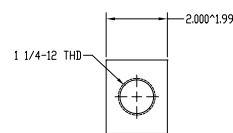
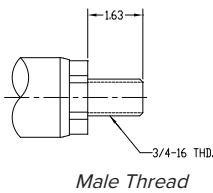
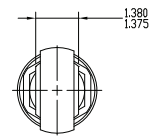
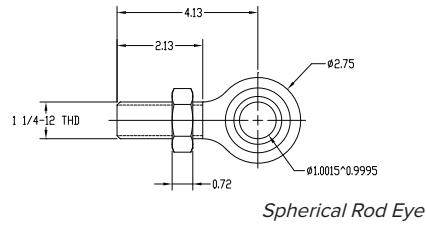
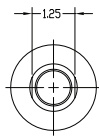
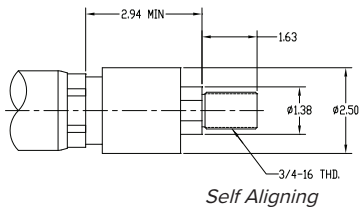
HD516 Parallel Offset Motor Configuration



HD516 Inline Motor Configuration



HD516 Rod End Conditions (choose one)



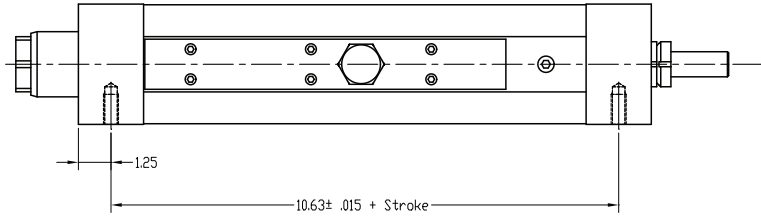
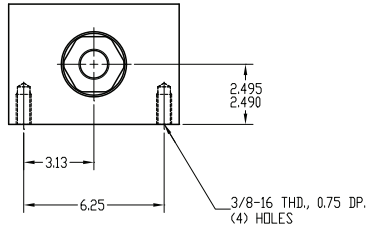
Female Thread shown on drawings above.

Eliminator HD516 Actuator
Without Switch Tracks for Mounting Limit Switches
English Dimensions

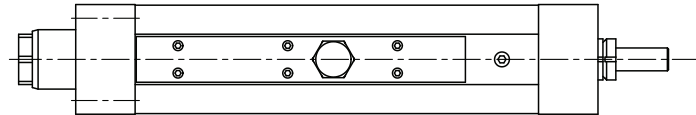
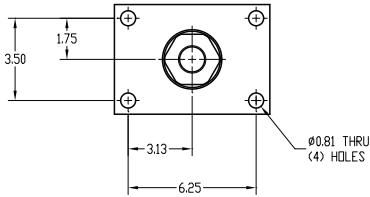


HD516 Actuator Mount Configurations (*choose one*)

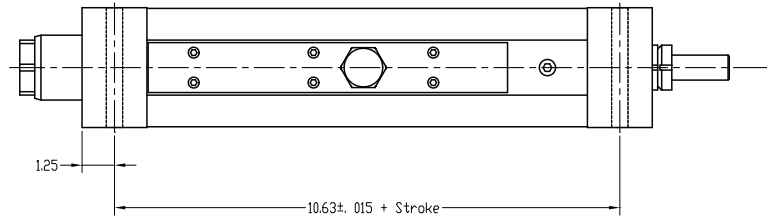
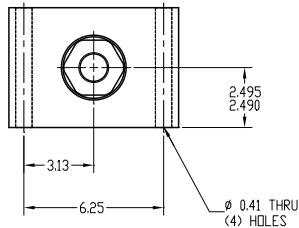
HD516 Bottom Mount Dimensions



HD516 Front Flange Mount Dimensions



HD516 Foot Mount Dimensions



HD516 Trunnion Front Mount or Rear Mount Dimensions

